

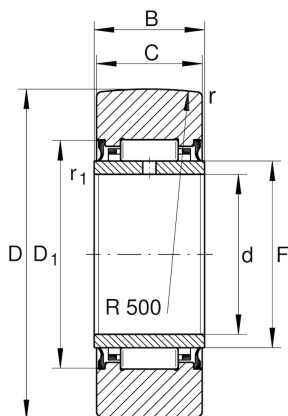
NA2202-X-2RSR

Yoke type track roller

Schaeffler ID:
0000284360000

Yoke type track rollers NA22...-2RSR,
without axial guidance, lip seals on both
sides

Technical information



Main Dimensions & Performance Data

D	35 mm	Outside diameter
F	20 mm	Raceway diameter inner ring
C	13.8 mm	Width, outer ring
$C_{r w}$	7,600 N	Basic dynamic load rating, radial
$C_{0 r w}$	9,900 N	Basic static load rating, radial
$C_{u r w}$	1,390 N	Fatigue load limit, radial
$n_{D G}$	3,400 1/min	Speed on permanent grease lubrication
	74.6 g	Weight

Dimensions

d	15 mm	Bore diameter
B	14 mm	Width, inner ring
$D_{1 \min}$	26 mm	Minimum mounting dimension
r_{\min}	0.6 mm	Minimum chamfer dimension
$r_{1 \min}$	0.3 mm	Minimum chamfer dimension
R	500 mm	Radius of outer ring outside profile